

Personnel Activities Management System



TimeLOG PRO is a comprehensive data collection software that streamlines work flow in your organization by handling ALL employees' activities, such as: time & attendance, access control, task management and absence balance.

You can use any card technology for the employee - magnetic, barcode, proximity or smart card. For additional security you can use the cards with biometric verification or identification methods, such as fingerprint or other biometric methods.

TimeLOG is designed for use in small to medium organizations, merging the latest developments in IT with great flexibility.

You will cover the cost of the system in no time at all

What can TimeLOG do for your company?

Benefits

Improves control by eliminating:

- Theft of time
- Unauthorized overtime payments
- Unnecessary legal disputes with employees
- Unfair or biased payments

Improves payroll accuracy by eliminating:

- Calculation errors
- Rounding mis-adjustments
- Accidental overpayments
- Cash disbursements to correct payroll errors

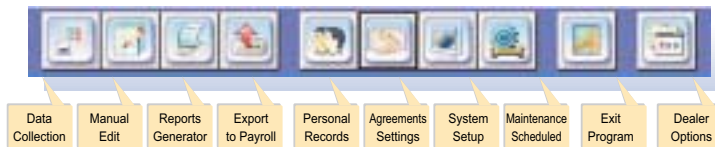
Improves payroll processing:

- Automated timecard totaling
- Attendance data processed electronically
- Automated reporting
- Direct electronic transfer of time data to payroll

Additional Benefits

- Eliminates time wasted collecting and processing paper timecards
- Management reports show where your labour costs originate

System typically pays for itself in under six months - Fast ROI



Features

- **Fingerprint:** enrolling a fingerprint template (either at the PC or the time recording terminal), which will later be verified when employees swipe their cards. This feature will increase the level of security for access control
- Option to define more than one card per employee for a defined period of time
- Option to assign several work rule agreements to one employee per time period
- Clock key tab Function field includes: **Partial Absence** - allowing the employee to book absences of several hours per day, and **Periodic Absence** - allowing employees to book a date range for absence
- Generate management and control reports
- Obtain for each employee a performance analysis report on annual attendance, absences, lateness, over time, etc.
- Import file utilities for both employees and project details
- Multi-level project costing module for information on costs, according to man-hours and direct costs
- A multi-lingual system

Export



Easy interfacing with most payroll programs

Employee



An extended employee file, for keeping and updating all employees' personal details. A Word document can be attached to each file.

Edit



Enables data adjustments for employee or group of employees for selected dates

Statistics



Powerful reports presenting periodical time & attendance related statistics, such as: overtime, late arrivals, sick leave, etc.

Modules

Time & Attendance

The solution for advancing companies to automated and accurate time tracking of employees' hours. Designed for streamlining payroll processes.

Work Rules

A set of agreements specifying various organization work rules

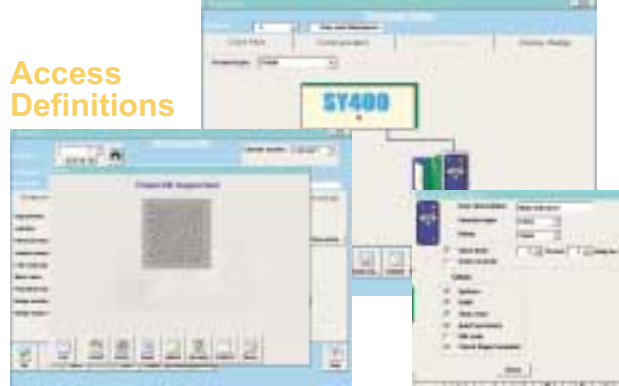


Access Control

The user defines parameters to monitor access, identify users requesting access, record access attempts, and grant or deny access based on pre-established rules. Increases level of security and safety in the organization, safeguarding both staff and company assets.

Access Definitions

Defining access permissions per employee per door per time zone



Project Costing

Collecting and tracking employees' working hours in pre-defined projects, from different departments. This forms the basis for accurate costing.

Project Costing

Specifying projects and related employees' hours



Absence Balance

All paid absences will be monitored. The system will raise an alarm if an employee tries to book an absence exceeding his entitlement. Balances monitored include vacation, sick leave, etc.



Future Absences

The generated reports enable both maintenance of accurate absence records, and future planning



Complementary Capabilities (additional modules)

Virtual Terminal



Enable employees to report their attendance from their PC workstation instead of at the time recording terminal

E-TimeLOG



E-TimeLOG uses internet technologies with TimeLOG's database, thus enabling all employees to log-in through their Internet browser for all attendance reporting

P.I.P - Presence Information Panel



Displays an online graphic report of which employees are present / absent

TimeLOG offers

- Built-in template employee agreements: use-as-is, customize or define your own
- Global absences: enables multiple employee periodic absence definitions
- Weekly, bi-weekly, semi-monthly, monthly and flexi pay periods
- Accommodates fixed and flexi-time schedules
- Comprehensive PDF format on-line help
- Monitoring and planning absence forecast screen
- Access control for small to medium-size enterprises
- Display online Totals and employee Balance (only on TCP/IP by using the SY-Server)



Comparison Table for TimeLOG Junior, Standard, Mini and PRO

	 Junior	 Standard	 Mini	 PRO
No. of Employees	50	250	30	unlimited
Work Rules	2 periodic/3 basic daily	unlimited templates		unlimited templates
Work Rules - Time Band and Core Time	No	Yes		Yes
Employee File	basic details	full details		full details
Payroll	No	Yes		Yes
Dictionary - Time Classification	15	50		30
Dictionary - Pay Category	7	30		7
Dictionary - Day Type	5 (English)	unlimited		unlimited
Reports - Customize	No	unlimited		unlimited
Reports - Generator	Yes	Yes		Yes
Reports	limited	basic reports		variable reports
Terminal Type	1 terminal only connected in serial port	unlimited terminals, TCP/IP, modems and serial port		unlimited terminals, TCP/IP, modems and serial port
Multi User	No	No		Yes
Project Module	No	No		Yes
Access Module	Non	No		Yes
Balance Tracking	No	No		Yes
Import Employee and Project Details	No	Yes		Yes
Direct Connection to Word, Email, Excel	No	Yes		Yes
Statistical Report	No	Yes		Yes
Shift Rotation	No	Yes		Yes
Biometric fingerprint	No	Yes		Yes
Multi Level In Project Module	No	Yes		Yes
Report Absences On the Clock	No	Yes		Yes
Present Information Panel (Optional)	No	Yes		Yes
Future Absences Screen	No	Yes		Yes
Manual Edit - Employee's Global Adjustment	Yes	Yes		Yes
Employee File - Periodic Additional Work Rule	No	Yes		Yes
Employee File - Periodic Additional Badge	No	Yes		Yes
Blocks Duplicate Swipe in Defined Time	No	Yes		Yes
Display Last Transaction on the Clock	No	Yes		Yes
Terminals Supported	SY-711, SY-715	SY-777, SY-760, SY-780, SY-711, SY-715, SY-751, SY-755		SY-400, SY-777, SY-760, SY-780, SY-711, SY-715, SY-751, SY-755

Options: P.I.P, E-TimeLOG, Virtual terminal

P.I.P

E-TimeLOG, Virtual terminal, P.I.P

Terminal Options



Synel Industries Ltd. Yokneam Industrial Park, 2 Hamada St. POB 142, Yokneam 20692, Israel
 Tel: +972-4-959 6760 Fax: +972-4-959 0729, E.mail: info@synel.com, Site: www.synel.com
 UK: Synel Industries (UK) Ltd. Tel: +44-020-8900 9991, E.mail: sales@synel.co.uk, Site: www.synel.co.uk
 NA: Synel Industries N.A. Tel: +1-905-542 1774, E.mail: sales@synel-usa.com, Site: www.synel-usa.com
 Sweden: Ferox Konsult AB Tel: +46 -40-23 90 70, E.mail: mail@feroxkonsult.se, Site: www.feroxkonsult.se